

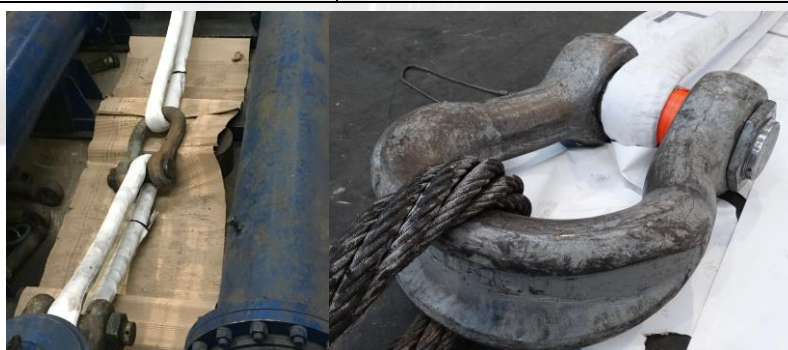
EXTREEMA® Roundslings

v.s.

PES Round slings



Core raw material:	100% Dyneema®	100% Polyester
Cover material:	100% Dyneema®(optional Cordura®)	100% Polyester
Certificate of EU-Preferential Origin.	✓ Dyneema® confirmed	✗ Polyester raw material (yarn) is produced in China.
Tensile strength	Dyneema® is 15 times stronger than steel.	PES is 2 times stronger than steel
D:d ratio	1:1 for Extrema® round slings	approx. D/d 1:2 small WLL / D/d 1:3 high WLL
Diameter of sling	100% (core diameter WLL 100ton 90mm)	140% (1,4 until 1,5 x bigger as Extrema® (Core diameter 100 ton 140mm)
Max. Temperature	70-80 degrees °C.(depending cover and application) Min.-50 degrees °C.	Max. 100 degrees °C. / Min.-40 degrees °C.
Water absorption	Dyneema® does not take up water.	Polyester takes up water.
Melting point	Appr. 150 degrees °C.	Appr. 250 degrees °C.
Elongation at WLL	< 1%	< 3 until 5%
Elongation at break	≈ 3,5%	≈ 8 until 10%
Weight	<ul style="list-style-type: none"> • Extrema® slings float on water. • 100% 	<ul style="list-style-type: none"> • Polyester slings sink in water due to own weight. • 250% PES is 2,4 until 3 times heavier compared with Extrema®
Puncture resistance (see diagram enclosed)	✓ very good, proved by testing.	✗ poor, according to puncture tests on sleeve/cover.
Abrasion resistance (see diagram enclosed)	✓ very good, proved by testing.	✓ good, proved by testing.
Cut resistance (see diagram enclosed)	✓ very good,proved by testing.	✗ poor, according to cutting tests, the sleeve with polyester (orange part) is very sensible to sharp objects and will damage.



D:d ratio between Extrema® round sling and shackle/pin = 1:1.



Lift-TEX Industrie B.V.
 Feithspark 9-1
 9356 BX Tolbert
 The Netherlands
 Tel: +31(0)594 200010
 Fax: +31(0)594 200019
 www.lift-tex.nl



Weights

EWL = 5m	Extreema®	Polyester	Steel Grommet
WLL	Weight(kg)		
40	17	40	79
50	21	56	99
75	32	86	149
100	47	111	177
125	63	140	241
150	78	170	276
200	107	223	355

copyright © by LIFT-TEX® Industrie b.v.

EXTREEMA®

Diameter at WLL

	Steel Grommet	Extreema®	Polyester
WLL	ø in mm		
40	48	50	98
50	54	60	119
75	66	75	140
100	72	100	155
125	84	125	197
150	90	140	222
200	102	170	260

Above mentioned information is subject to changes as a result of continuous product developments. No rights can be claimed from them.

All rights reserved ©. Copyright by Lift-TEX